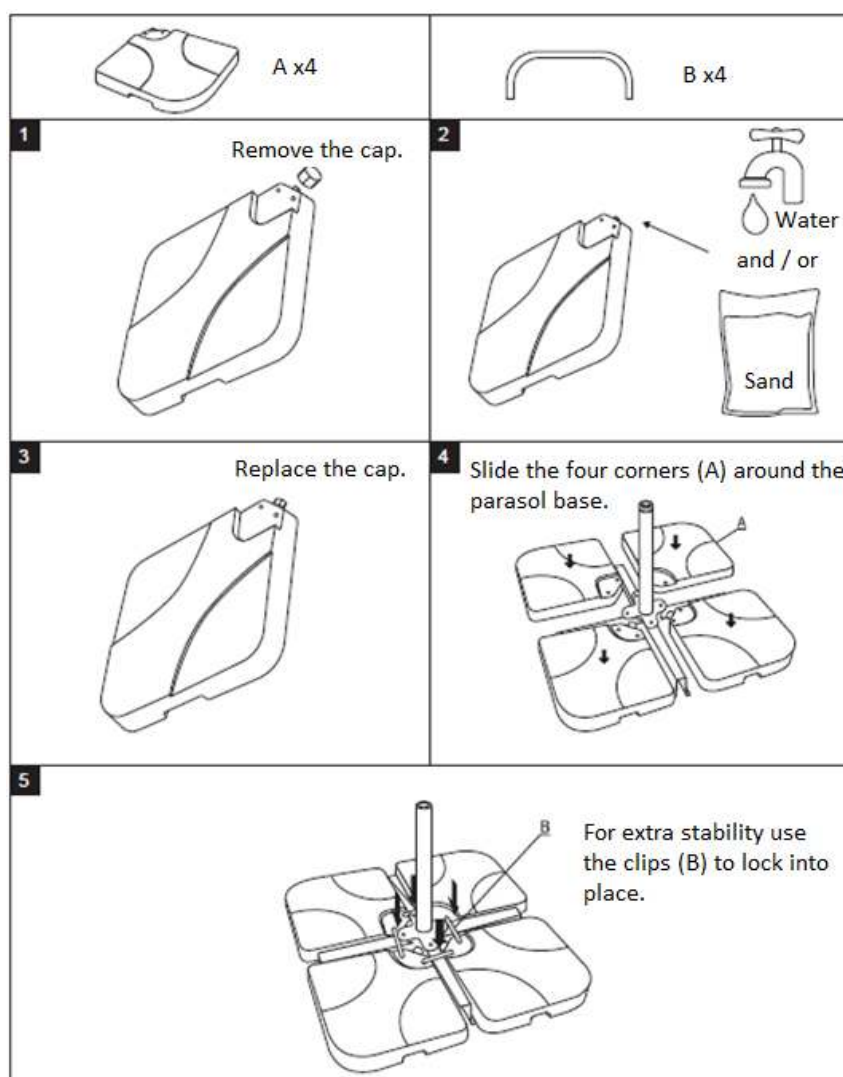


4-Piece Cantilever Parasol Base Instruction Manual

G2307

General information and safety warnings

- Each section has a capacity of 14 litres.
- Once filled each part will become heavy (water: 15kgs; sand 18kgs*; water and sand approx. 20kgs*) (*depending on the type and grade of sand used).
- Take care when lifting.
- Do not fill with water if exposed to freezing temperatures. The formation and expansion of ice may crack the base.
- If using sand and water, fill with dry sand first followed by the water.
- Using a funnel may assist in making filling easier.
- Not suitable for commercial purposes.



GUARANTEE

IMPORTANT

Please do not return this product without first calling the Customer Service number below:

0871 911 7031*

Thank you for purchasing this product, which has been made to demanding high quality standards and is guaranteed for domestic use against manufacturing faults for a period of 12 months from the date of purchase.

Register your product for an extended 2-year warranty by visiting our website www.gardengearonline.co.uk. The product must be registered, along with your contact information, within 30 days of purchase. For full terms and conditions please visit our website.

This guarantee does not affect your statutory rights. If your product fails due to a defect in material or workmanship during this period, please return it to the place of purchase. Normal wear and tear is not covered under the guarantee.

Any guarantee is invalid if the product has been misused or subject to neglect or an attempted repair other than by our own service centre.

Due to continuous product improvement, we reserve the right to change the product specification without prior notice.

After Sales Customer Service:

Branded Garden Products Ltd, Premier House, Hortonwood 7, Telford, TF1 7GP

Telephone: 0871 911 7031*

E-mail customerservice@gardengearonline.co.uk

Please retain for future reference.

Colours and contents may vary.

*Calls cost 13p per minute, plus your phone company's access charge